



MODEL : NWGMH-15~50

Multi Jet Dry Dial Meter

FEATURES

- Robust Design with Heavy Body & Brass Cover
- Dry dial Magnetic drive with Magnetic Shield
- Technical data confirming to ISO 4064 Standard
- Interchangeable spare parts
- Vacuum sealed Register giving IP-68 protection
- Body Material can be Cast Iron/ Brass or Plastic
- Accuracy R80 / R100 / R160
- Available for Cold / Hot Water
- Option of Plastic Can / Copper Can Register
- Available in Non Magnetic (Liquid Sealed) type



NISSEI INDUSTRIAL & METERING CO.

FACTORY ADDRESS NO 563 , PANLONG 2ND ROAD , XIAMEN CHINA ,

CHINA OFFICE ADDRESS : 601, AOLISAI MANSION, 958 NORTH QIANHU RD NINGBO CHINA

UAE OFFICE ADDRESS : UNIT 3025 KAGUNA TOWER CLUSTER A JLT DUBAI UAE

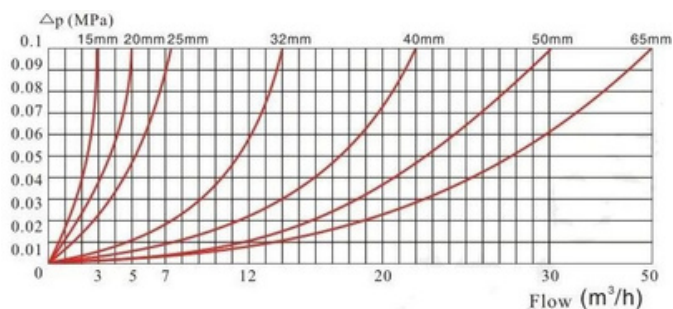
UAE WHATS APP / MOBILE PHONE +971543995281 , CHINA WHATS APP / MOBILE PHONE : +86 18668567878

WWW.NWGWATERMETERS.COM : E MAIL EXPORT@NWGWATERMETERS.COM : NWGMETERS@GMAIL.COM

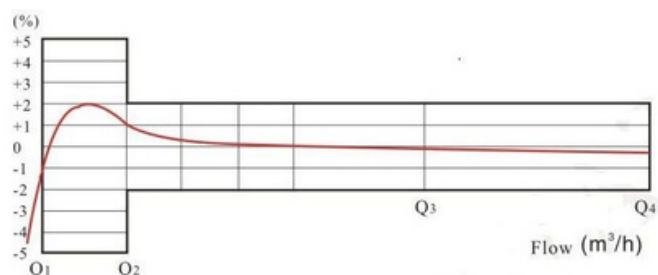
Main Technical Data

DN	Mm	15	20	25	32	40	50	65
SIZE	Inch	1/2"	3/4"	1"	1 1/4"	1 1/2"	2"	2 1/2"
Q4(m³/h)		3.125	5	7.875	12.5	20	31.25	50
Q3(m³/h)		2.5	4	6.3	10	16	25	40
R80	Q2(L/h)	50	80	126	200	320	500	800
	Q1(L/h)	31.25	50	78.75	125	200	312.5	500
R100	Q2(L/h)	40	64	100.8	160	256	400	640
	Q1(L/h)	25	40	63	100	160	250	400
R125	Q2(L/h)	32	51.2	80.64	128	204.8	320	512
	Q1(L/h)	20	32	50.4	80	128	200	320
R160	Q2(L/h)	25	40	63	100	160	250	400
	Q1(L/h)	15.62	25	39.37	62.5	100	156.2	250
Min reading(m³)		0.00005	0.00005	0.00005	0.00005	0.00005	0.00005	0.00005
Max reading(m³)		99999	99999	99999	99999	99999	99999	99999
Max pressure(MAP)		16	16	16	16	16	16	16
Max loss(ΔP)		63	63	63	63	63	63	63
Max temperature		T50	T50	T50	T50	T50	T50	T50
Pulse output option	reed switch							
	hall							
	non-magnetic metal plate							

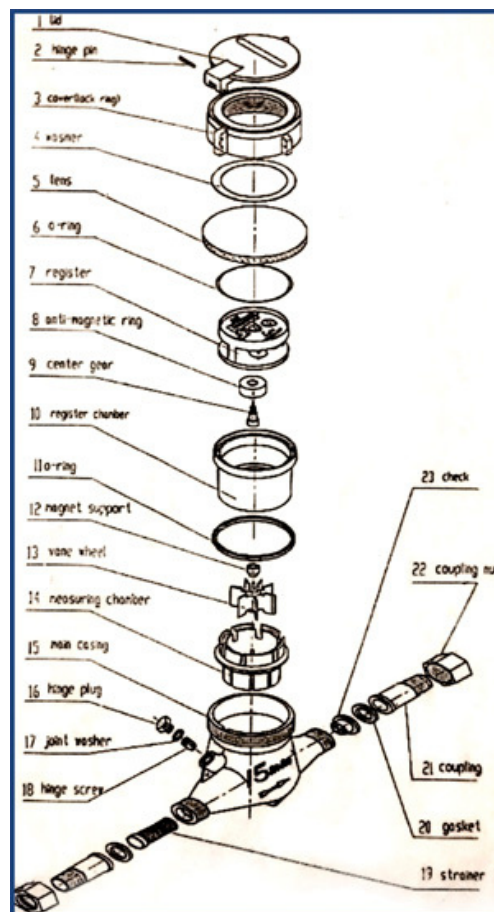
Pressure Loss Curve



Flow Error Curve



Blasted Assembly



Maximum Permissible Error

- (Q1) inclusive upto excluding (Q2) is $\pm 5\%$
- (Q2) inclusive upto and including (Q4) is $\pm 2\%$ cold; $\pm 3\%$ hot

Working Condition

Water Temperature: 50°C for Cold Water Meter & 90°C for Hot Water Meter
 Working Pressure: 1.6MPa
 Maximum Test Pressure: 2.0MPa

Dimension & Weight

Meter Size	Length (L)	Width (B)	Height (H)	Connecting Thread
mm	mm			D
15	165/190	98	104	G 3/4B
20	190/195	98	106	G 1B
25	260/225	103	115	G1 1/4B
32	260/230	103	115	G1 1/2B
40	300/245	124	153	G 2"B
50	300	124	153	G2 1/2 B
	280	165	175	Flange connecting GB 4216.4
65	280	165	179	

